



**WHOLESALE CATALOGUE**

[DEADHEADCHEMIST.COM](http://DEADHEADCHEMIST.COM)



---

**FOR THE WISE, THE BRAVE, AND THE WILD.  
YOUR ONLY LIMIT IS YOUR MIND.**

---

**-DEADHEAD CHEMIST-**

# TABLE OF CONTENTS

<b>LSD INTRO PAGE .....</b>	<b>4</b>
<b>100ML 1P-LSD MICRODOSE .....</b>	<b>5</b>
<b>LSD EDIBLES.....</b>	<b>6</b>
<b>LSD MICRODOSE EDIBLES.....</b>	<b>7</b>
<b>LSD TEA.....</b>	<b>8</b>

<b>MAGIC MUSHROOM INTRO PAGE .....</b>	<b>9</b>
<b>PSILOCYBIN MICRODOSE .....</b>	<b>10</b>
<b>DRIED MUSHROOMS .....</b>	<b>11</b>
<b>PSILOCYBIN EDIBLES.....</b>	<b>12</b>
<b>SHROOM TEAS.....</b>	<b>13</b>
<b>TRIP STOPPER .....</b>	<b>14</b>

<b>DMT INTRO PAGE.....</b>	<b>15</b>
<b>N,N-DMT CARTRIDGE .....</b>	<b>16</b>
<b>4ACO-DMT MICRODOSE .....</b>	<b>17</b>


<b>THC INTRO PAGE.....</b>	<b>18</b>
<b>THC ASSORTED GUMMIES .....</b>	<b>19</b>
<b>THC CHOCOLATE EDIBLES.....</b>	<b>20</b>
<b>THC CONCENTRATES.....</b>	<b>21</b>

<b>CBD INTRO PAGE.....</b>	<b>22</b>
<b>CBD CANDY.....</b>	<b>23</b>

<b>ACCESSORIES INTRO PAGE.....</b>	<b>24</b>
<b>ACCESSORIES .....</b>	<b>25</b>

<b>CONTACT US .....</b>	<b>26</b>
-------------------------	-----------





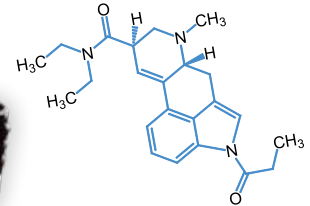
**LSD  
PRODUCTS**

## DEADHEAD CHEMIST

Please note: EMT subjected to 5% GST

## 100ML 1P-LSD MICRODOSE

1P-LSD also known as 1-Propionyl-Lysergic Acid Diethylamide is a psychedelic substance that helps its users experience a much needed trip. To use this substance, it is best to microdose to avoid the highly deleterious effects such as hallucinations. The recommended microdose amount that will initiate a trip without causing a negative effect is about 5-10ml.



## BENEFITS OF DEADHEAD CHEMIST 1P-LSD MICRODOSE

1. It helps to treat depression and other anxiety conditions
2. It boosts blood flow into the cerebrum thereby improving brain functions
3. It helps to counteract sexually related problems such as improving sex drive
4. It has been said to boost creativity and cognitive functions
5. It increases empathy
6. It boosts self-confidence and improves self-esteem
7. It potentially improves healthy human relationship

## PRICING

25-50:

\$35EA

51-99:

\$30EA

100+:

\$25EA

MSP

\$65

## 50ML 1P-LSD MICRODOSE

## PRICING

25-50:

\$30EA

51-99:

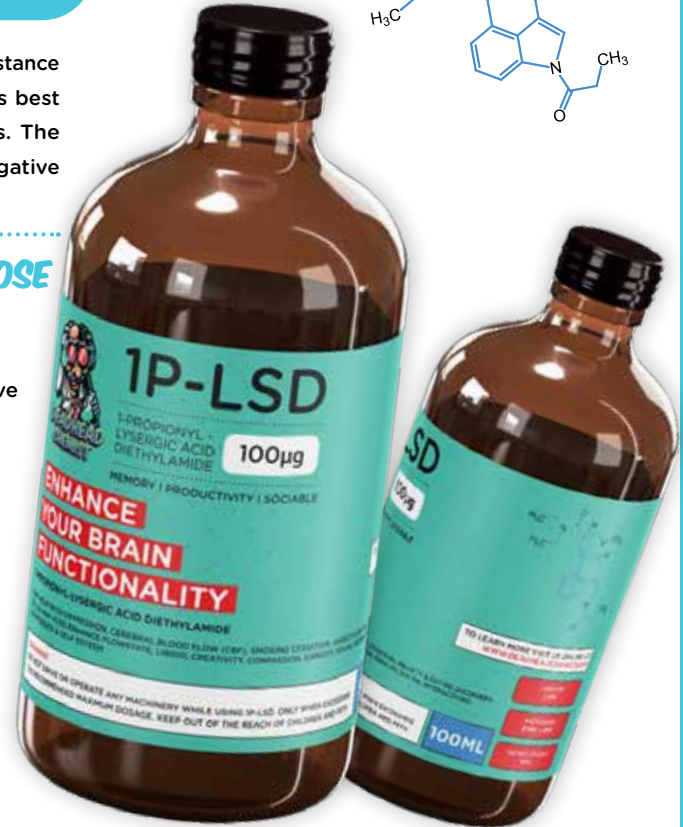
\$25EA

100+:

\$20EA

MSP

\$60



\*AVAILABLE UPON REQUEST: 200UG 1P-LSD

# LSD EDIBLES

Some research has shown that LSD 100ug has helped people with such mental disorders as obsessive-compulsive disorder (OCD), post-traumatic stress disorder (PTSD), alcoholism, depression, and cluster headaches.

It has long been known that psychedelics promote neurite growth and synaptic plasticity. Psychedelics have also been shown to have potent anti-inflammatory activity and therapeutic effects in animal models of inflammatory diseases including asthma, and cardiovascular disease and diabetes.

## BENEFITS OF LSD (LYSERGIC ACID DIETHYLAMIDE)

1. Creativity
2. Energy
3. Flow states
4. Productivity/focus
5. Improved relationships/increased empathy
6. Athletic coordination
7. Leadership development

## WHOLESALE PRICING

20-100:

\$18EA

100+:

\$14EA

MSP

\$35



- |   |                        |   |                      |
|---|------------------------|---|----------------------|
|    | 1. Cola Bottle         |    | 7. Sour Mint         |
|    | 2. Fuzzy Peach         |    | 8. Sour Rainbow Belt |
|    | 3. Gummy Bear          |    | 9. Tangy Fish        |
|   | 4. Sour Blue Raspberry |   | 10. Wacky Watermelon |
|  | 5. Sour Jolly Rancher  |  | 11. Wild Strawberry  |
|  | 6. Sour Key            |   |                      |

# LSD MICRODOSE EDIBLES

Microdosing LSD involves taking small doses of LSD that are not strong enough to induce psychedelic effects, cause intoxication, or significantly impact consciousness.

Microdosing LSD may have numerous benefits. These include the ability to:

1. Enhance cognitive processes and abilities
2. Increase energy levels
3. Improve emotional balance and mood
4. Reduced anxiety
5. Help treat depression
6. Help treat addiction and reduce substance misuse
7. Help reduce pain
8. Help improve migraine and cluster headaches
9. Help reduce symptoms of attention deficit disorder
10. Enhance self-care trusted source
11. Enhance senses
12. Improve cardiovascular endurance
13. Increase sleep quality
14. Reduce sensitivity to trauma



**LSD MICRODOSE GUMMY BEARS**  
**TOTAL DOSE: 100UG**  
**5 GUMMY BEARS 20UG EACH**

## WHOLESALE PRICING

20-100:

\$30EA

100+:

\$25EA

MSP

\$60





## DEADHEAD CHEMIST

# LSD TEA

Benefits of Deadhead Chemist LSD Tea include: improvements with depression, cerebral blood flow (CBF), smoking cessation, libido, anxiety disorders as well as increase flow state, creativity, improved relationships/increased empathy, social interactions and boost confidence & self esteem. Deadhead Chemist makes no medical or efficacy claims and does not sell these products for human or veterinarian use.

LSD and other psychedelics imitate the serotonin neurotransmitter when they enter the brain, and we know that serotonin is found in higher levels in flow states. Similarly, LSD increases the levels of dopamine in the brain, which is another neurotransmitter found in higher levels in flow states.

## LSD TEA THERAPEUTIC USE

If you have LSD Tea while attending therapy, you may find that issues and topics that previously felt difficult to reach are suddenly accessible. You may also notice creative insight into yourself, your past, and your relationships that you didn't before.

## WHOLESALE PRICING

50+:	MSP
\$15EA	\$30







# **MAGIC MUSHROOM PRODUCTS**

## PSILOCYBIN MICRODOSE

Here at Deadhead Chemist we take pride as the best magic mushroom supplier in Canada, our top priority is to provide our customers with the most secure, reliable, and safe experience. We showcase the best magic mushrooms. Deadhead Chemist creates all their products with premium quality to give you unmatched experience with your unique needs in mind. Our magic mushrooms are proudly Canadian grown in Vancouver, BC with a focus on quality, purity, and consistency.

### BENEFITS OF MICRO-DOSING

To reduce the frequency and intensity of undesirable states caused by various forms of mental illness including:

1. Depression
2. Anxiety
3. ADD/ADHD
4. Mood disorders
5. PTSD
6. Addiction

To increase the frequency and intensity of desirable states/outcomes, including:

1. Creativity
2. Energy
3. Flow states
4. Productivity/focus
5. Improved relationships/increased empathy
6. Athletic coordination
7. Leadership development

### PRICING: QUANTITY

100mg + (Energy+Focus*, Genius*, Limitless*, Zen Anxiety*)			200mg			300mg + (CBD*)		
20-100:	100+:	MSP	20-100:	100+:	MSP	20-100:	100+:	MSP
\$20EA	\$15EA	\$55	\$30EA	\$22EA	\$65	\$40EA	\$32EA	\$85



#### 1. 100MG

Made With: Dried Psilocybe and Ginger Root Extract



#### 2. 200MG

Made With: Dried Psilocybe and Ginger Root Extract



#### 3. 300MG

Made With: Dried Psilocybe and Ginger Root Extract



#### 4. CBD

Made With: Dried Psilocybe and CBD



#### 5. Energy + Focus

Made With: Dried Psilocybe and Lions Mane



#### 6. Genius Brain

Made With: Dried Psilocybe, Lions Mane and Niacin



#### 7. Limitless

Made With: Dried Psilocybe, Chaga, Reishi, and Shitake



#### 8. Zen Anxiety

Made With: Dried Psilocybe, Lions Mane, Ginkgo Biloba, and Bac opa Monnier

### ADDITIONAL MICRODOSES

1. 500mg (Penis Envy)
2. 200mg (Penis Envy)
3. 500mg (Blue Meanies)
4. 200mg (Blue Meanies)
5. 500mg (APES)
6. 200mg (APES)
7. Mood Enhancer
8. Paul Stamets
9. Scooby Snacks
10. Neuro
11. Immune
12. Sleep Aid
13. Alpha Performance

DEADHEAD CHEMIST

# DRIED MUSHROOMS

## WHOLESALE PRICING DRIED MUSHROOMS

Price Available Upon Request

1. A+
2. Alacabenzi
3. Amazonian
4. Apes
5. Avery
6. Aztec Gods
7. B+
8. Blue Meanies
9. Brazillian
10. Cambodian
11. Golden Emperors
12. Golden Teachers
13. Jedi Mind Fuck
14. Malabar
15. PE #6
16. Penis Envy
17. Transkei
18. Vietnamese
19. White Rabbit



**\*AVAILABLE UPON REQUEST: SPAWN BAGS**



# PSILOCYBIN EDIBLES

## CHOCOLATES

### DINO SHROOM INFUSED CHOCOLATES

3000MG TOTAL  
3PCS 1000MG EACH

.....  
WHOLESALE PRICING: \$20  
MSP: \$45



### MAGIC MUSHROOMS MILK CHOCOLATE

1000MG TOTAL  
4PCS 250MG EACH

.....  
WHOLESALE PRICING: \$7  
MSP: \$16



### MAGIC MUSHROOMS DARK CHOCOLATE

1000MG TOTAL  
4PCS 250MG EACH

.....  
WHOLESALE PRICING: \$7  
MSP: \$16



### 3000MG CHOCOLATE BARS

3000MG TOTAL

.....  
Flavours: Sea Salt Dark  
Chocolate, Milk Chocolate,  
Cookies and Cream,  
Milk Chocolate Crunch

.....  
WHOLESALE PRICING: \$18  
MSP: \$40



### 5000MG CHOCOLATE BARS

5000MG TOTAL

.....  
Flavours: Sea Salt Dark  
Chocolate, Milk Chocolate,  
Cookies and Cream,  
Milk Chocolate Crunch

.....  
WHOLESALE PRICING: \$28  
MSP: \$60



## GUMMIES

### LEGO JELLIES

1000MG TOTAL  
4PCS 250MG EACH

.....  
Flavours: Blue Raspberry,  
Cherry, Grape, Watermelon,  
Green Apple

.....  
WHOLESALE PRICING: \$7  
MSP: \$16



### MICROBITES

3000MG TOTAL  
15PCS 200MG EACH

.....  
Flavour: Assorted?

.....  
WHOLESALE PRICING: \$20  
MSP: \$50



### SOUR GEMS

3000MG TOTAL  
4PCS 750MG EACH

.....  
Flavours: Grape, Cherry,  
Lime, Blue Raspberry

.....  
WHOLESALE PRICING: \$20  
MSP: \$45





DEADHEAD CHEMIST

# SHROOM TEAS

PRICING: QUANTITY

10+:  
\$10EA

MSP  
\$25



JUST PEACHY  
2 GRAMS  
BLUE MEANIES



RASPBERRY BLISS  
2 GRAMS  
APES



MANGO  
2 GRAMS  
PENIS ENVY

DEADHEAD CHEMIST

# TRIP STOPPER

## MINIMIZE THE BAD TRIP EFFECTS

Vitamin C has an adverse effect on Psilocybin and Valerian root has a calming effect on the nervous system. So if things get a little too intense, the trip stopper is here to minimize the bad trip effects

## 6 CAPSULES PER PACKAGE

## INGREDIENTS:

Valerian Root & Ascorbic Acid (Vitamin C)

## DIRECTIONS:

Take two capsules if you are having a bad trip

## PRICING: QUANTITY

50+:  
\$2EA

MSP  
\$5





**DMT  
PRODUCTS**

# N,N-DMT CARTRIDGE

Deadhead Chemist infused DMT is extracted from Brazilian Mimosa Hostilis root bark and re-crystallized three times for purity. DMT is the active ingredient in ayahuasca, a traditional South American brewed tea and is used for its psychoactive, hallucinogenic effects. "Spiritual insight" is one of the most commonly reported positive side effects of the drug. [510 thread cartridge](#).

## INSTRUCTIONS:

Before smoking the DMT Pen take 5 deep breaths. As soon as you exhale take your DMT Pen and slowly inhale until your lungs are at full capacity and hold for at least 20+ seconds before exhaling fully. Follow directly after, take a second slow inhale and hold again for 20 seconds before you slowly start exhaling. Once fully exhaled immediately go for your third slow inhale and hold till you've broken through, and you will be in the magical colourful dimension of the Deadhead Chemist DMT Spirit Molecule vape pen.

## PRICING: N,N-DMT CARTRIDGE 1ML + BATTERY

20-35 Sessions | 800mg DMT

5+:

\$130EA

MSP

\$230

### CARTRIDGE ONLY

5+: 120EA  
MSP: 220EA

## PRICING: N,N-DMT CARTRIDGE 0.5ML + BATTERY

10-20 Sessions | 400mg DMT

5+:

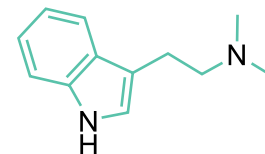
\$70EA

MSP

\$150

### CARTRIDGE ONLY

5+: 60EA  
MSP: 140EA

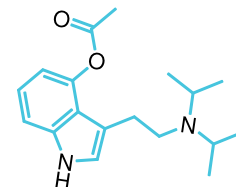


\*5-MEO-DMT AVAILABLE UPON REQUEST



## 4ACO-DMT MICRODOSE

DMT, which is scientifically known as N,N-Dimethyltryptamine is a psychoactive chemical substance that is found naturally in some plants and animals. It can even be found in the human brain, so we are somewhat already exposed to this chemical substance. It is used by some cultures, for ritual purposes, to alter the state of their consciousness and mood. People like the Amazonians sometimes used DMT found in ayahuasca to undergo this psychedelic experience. DMT was developed by the same man who discovered LSD, Mr. Albert Hofmann, as well as Franz Troxler. They discovered DMT with Sandoz Limited who did the honor of patenting the drug in 1963.



### BENEFITS OF DEADHEAD CHEMIST 4-ACO-DMT MICRODOSE:

1. It creates a feeling of peace and relaxation in the mind and body.
2. It enhances the sense of positivity in our mood.
3. It gives us a stronger feeling of empathy and community.
4. It gives us the strength to focus and also ensures the mind is free of all negativities.
5. It enhances colours and intensifies one's physical perception.
6. It energizes and drives us on.

### WHOLESALE PRICING:

1-25:	26-50:	51+:	MSP
\$140EA	\$130EA	\$100EA	\$230





**THC  
PRODUCTS**

DEADHEAD CHEMIST

# THC ASSORTED GUMMIES

Description: Experience your own euphoria with Deadhead Chemist. Whether you're looking to experience the sweeter side, enhance your creativity, or relax and recharge, their wide array of fruit-flavoured gummies has you covered. Get your daily dose of THC with these classic, juicy, naturally flavoured candies. These bite-sized gummies are sour, chewy, and completely addictive! Made using pure lab-tested THC extracts, Deadhead Chemist made with care and the best ingredients to deliver an excellent, consistent dosage in every bite.

## FLAVOURS:

- |                   |                       |
|-------------------|-----------------------|
| 1. Banana         | 8. Rainbow Sour Belts |
| 2. Blue Raspberry |                       |
| 3. Cherry         | 9. Sour Keys          |
| 4. Coke Bottles   | 10. Sour Squares      |
| 5. Grape          | 11. Strawberry        |
| 6. Gummy Worms    | 12. Tropical          |
| 7. Jolly Ranchers | 13. Watermelon        |

**STRENGTH: 400MG THC**

**WHOLESALE PRICING: \$7**

**MSP: \$20**

## 1000MG THC MAGNUM BLUE RASPBERRY

**STRENGTH: 1000MG THC**

**WHOLESALE PRICING: \$20**

**MSP: \$60**





# THC CHOCOLATE EDIBLES

1. Cookies n Cream Chocolate Bites
2. Dark Chocolate Bites
3. M&Mz
4. Milk Chocolate Bites
5. Peanut Butter Cupz
6. Sea Salt Chocolate Bites
7. Smartiez

**STRENGTH: 500MG THC**

**WHOLESALE PRICING: \$7**

**MSP: \$20**

## THC CARAMELTS

### STRENGTH

1. 1:1 40MG THC: 40MG CBD
2. 80MG THC Indica
3. 80MG THC Sativa

**WHOLESALE PRICING: \$5**

**MSP: \$15**





DEADHEAD CHEMIST

# THC CONCENTRATES

## VAPE CARTS

### SATIVA

Blue Dream, Durban Poison,  
Goji OG, Jet Fuel, Soul Diesel,  
Trainwreck

### HYBRID

AC/DC, Bubble Gum, Gelato, Girl  
Scout Cookies, Minosa, Strawnana,  
Orange Cookies, Pineapple Express

### INDICA

Black Diamond, Death Bubba,  
Gorilla Glue, OG Kush,  
Sun Sherbert

**STRENGTH: 1.2G**

## PRICING: QUANTITY

5+:

\$20EA


MSP

\$45

AVAILABLE UPON REQUEST

PRE ROLLS, HASH, DIAMONDS, TINCTURES





DEADHEAD CHEMIST

# CBD CANDY

- |                   |                        |
|-------------------|------------------------|
| 1. Blue Raspberry | 8. Strawberry          |
| 2. Watermelon     | 9. Sour Keys           |
| 3. Sour Squares   | 10. Gummy Worms        |
| 4. Grape          | 11. Coke Bottles       |
| 5. Cherry         | 12. Jolly Ranchers     |
| 6. Banana         | 13. Rainbow Sour Belts |
| 7. Tropical       |                        |

**STRENGTH: 400 MG CBD**

**WHOLESALE PRICING: \$7**

**MSP: \$20**



1. Cookies n Cream Chocolate Bites
2. Dark Chocolate Bites
3. M&Mz
4. Milk Chocolate Bites
5. Peanut Butter Cupz
6. Sea Salt Chocolate Bites
7. Smartiez

**STRENGTH: 500MG CBD**

**WHOLESALE PRICING: \$7**

**MSP: \$20**

## THC CARAMELTS

### STRENGTH

1. 1:1 40MG THC: 40MG CBD
2. 80MG CBD Indica
3. 80MG CBD Sativa

**WHOLESALE PRICING: \$5**

**MSP: \$15**

## CBD CONCENTRATES VAPE CARTS

**STRENGTH  
800MG CBD**

### FLAVOURS

Bubblegum, Gelato, Mint, Orange, Pineapple Express, Platinum, Rose, Strawberry, Tangerine, Watermelon

**WHOLESALE PRICING: \$9**

**MSP: \$22**







DEADHEAD CHEMIST

# ACCESSORIES

APPAREL: \$15EA



1.

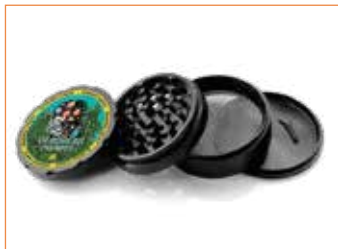


2.



3.

GRINDER:



MEDTAINER:



ROLLING TRAY: \$25EA



LIGHTER:





## CONTACT US

### WHO TO CONTACT IF I NEED HELP?

.....

We have a live chat option available for you to speak to agents right away in the bottom right corner of the window. You can also e-mail our support team at [support@deadheadchemist.com](mailto:support@deadheadchemist.com)

Customer service hours are from Monday to Friday from 9AM – 6PM PST

**SEND US AN EMAIL**

**[SUPPORT@DEADHEADCHEMIST.COM](mailto:support@deadheadchemist.com)**

**VISIT US ONLINE**

**[WWW.DEADHEADCHEMIST.COM](http://www.deadheadchemist.com)**



---

# THANK YOU!

---

*WE LOOK FORWARD TO HEARING FROM YOU*





**FOR MORE INFORMATION EMAIL  
US OR VISIT US ONLINE**

[SUPPORT@DEADHEADCHEMIST.COM](mailto:SUPPORT@DEADHEADCHEMIST.COM) | [DEADHEADCHEMIST.COM](http://DEADHEADCHEMIST.COM)